



Silicon Labs

Location

200 W Cesar Chavez Street
400 W Cesar Chavez Street
Austin, Texas 78701

Architecture & Design Firm

Gensler (2017-2019)
Mary Bledsoe (2017-present)

Size

43,000 sq. ft. (Over 12 floors in two buildings)

Industry

Information Technology Services

Featured Manufacturers

- Steelcase
- Bernhardt
- OFS
- Watson

Objectives

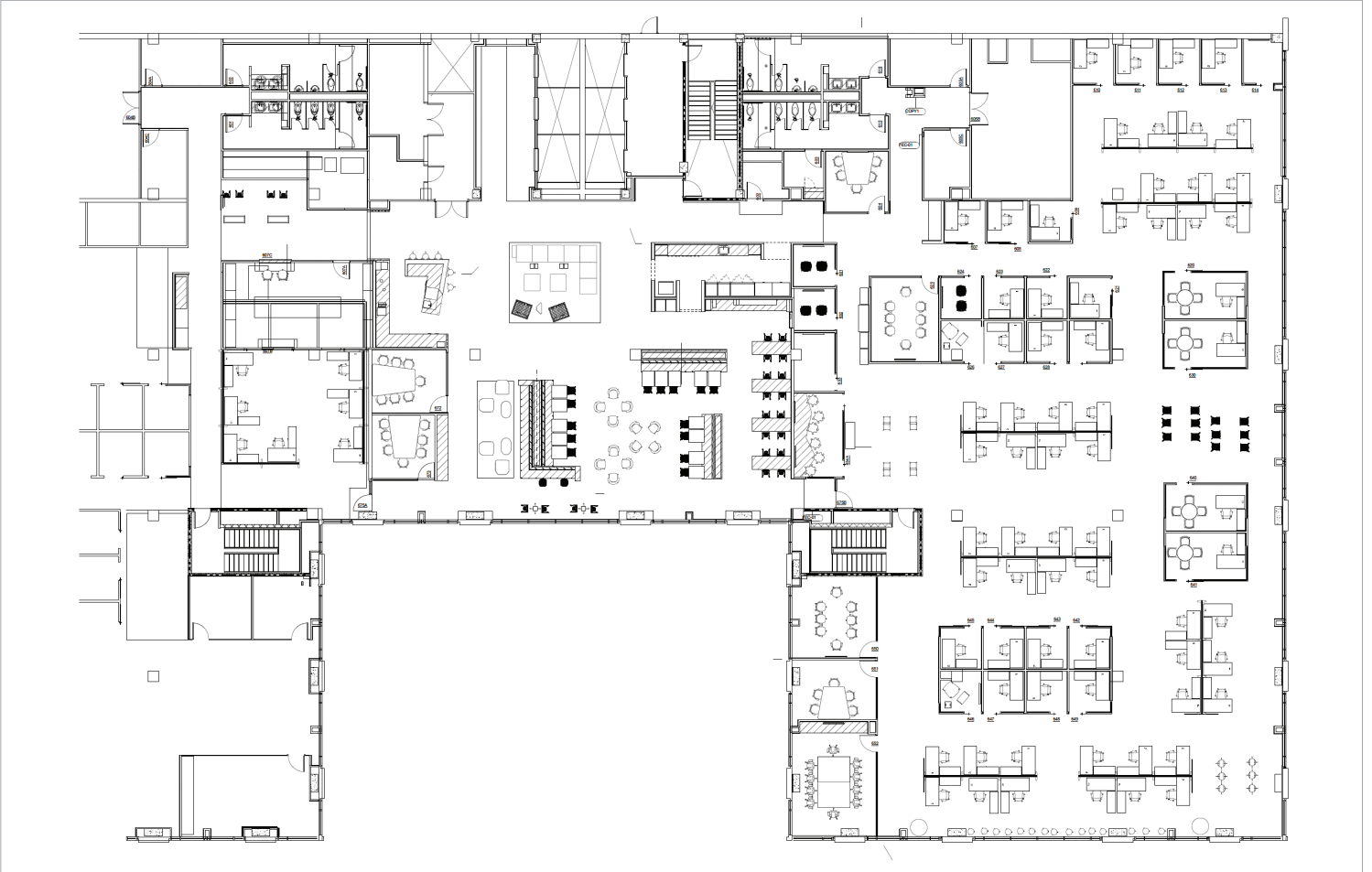
- Create a more open, lively and engaging workspace
- Accommodate all employees with consistent furniture standards
- Empower employees to manage their workspace configuration
- Outfit space with products that can be easily reconfigurable to adapt to changing needs

Services

- Design Support
- Furniture, Flooring & Architectural Walls Product Sourcing
- Installation & Reconfiguration

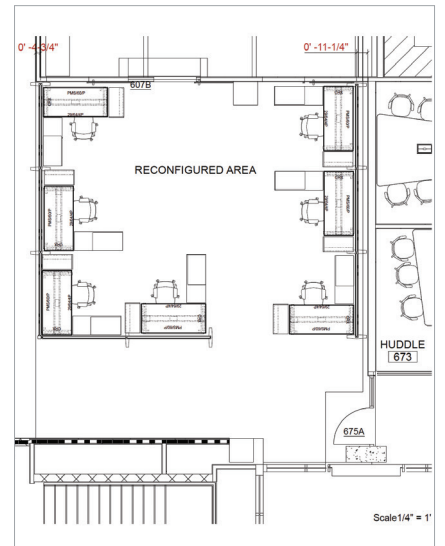
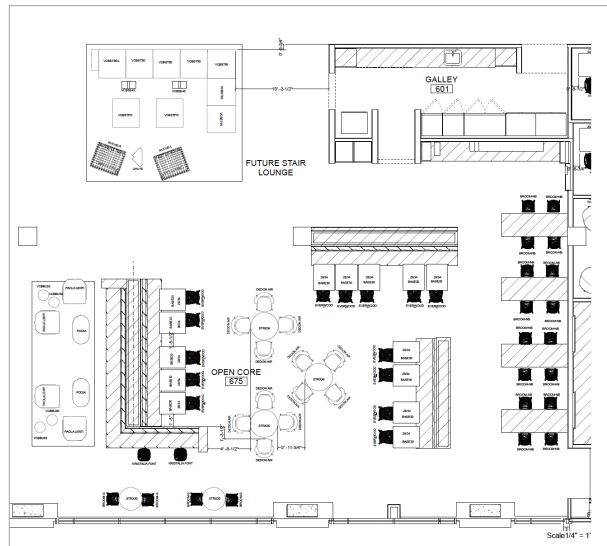
THE INITIAL SPACE

Silicon Labs has owned their space for over 13 years. Like many organizations, the needs of their team have evolved in that time frame — and continue to evolve. With that internal evolution, their space also has to change to continue being effective.



THE DESIGN

While McCoy Rockford bid an initial single project, the scope was adjusted and now work is completed in phases aligned with Silicon Labs' needs. The overarching goal of the project is to create a more open work environment that creates space for an increased headcount and supports a variety of purposes from focused work to collaboration.





THE FURNISHINGS

Individual workspaces leverage the Steelcase Answer Fence, a highly configurable and moveable furniture system based on a central beam housing all power and technology needs. Utilizing this product helped meet Silicon Labs' desire to have their employees take charge of their workspace. The product enables employees to work how they prefer — and can easily adapt as that preference changes. The same components are used in the limited number of private offices, which makes the space even more reconfigurable.

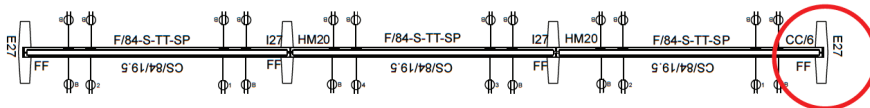
There is also a core space in the center of the building spanning three floors that also includes outdoor balconies. This central, vertical space offers flexibility for a range of needs, including group training, company-wide meetings, lounge or reception, entertaining and networking. A variety of ancillary furniture was selected and sourced to create different areas within the multi-floor space.

Featured Products

- **Steelcase Answer Fence:** The Answer Fence supports individual workspaces, with the flexibility to adapt and evolve as needs shift.

“My rep at McCoy Rockford is a rockstar. I can call her any time and she is quick to get me what I need. When I do engage an architect, sometimes the products she comes up with are so unique, and McCoy Rockford goes to any bounds to find the furniture. They always come through and work with the boutique furniture manufacturers as well as the larger ones.”

— Micah Branham, Facilities Manager





THE RESULTS

McCoy Rockford was contracted to supply the furnishings, which included sourcing products that were specified or suggesting comparable alternatives, finalizing the order and installation. Although the initial phase is finished, Silicon Labs' facilities manager continues to involve McCoy Rockford as their sole furniture dealer. Depending on scale, the facilities manager engages the team to specify furniture and finishes for a variety of spaces.

"I know I can give McCoy Rockford the parameter of any project and they run with it."

— Micah Branham, Facilities Manager

